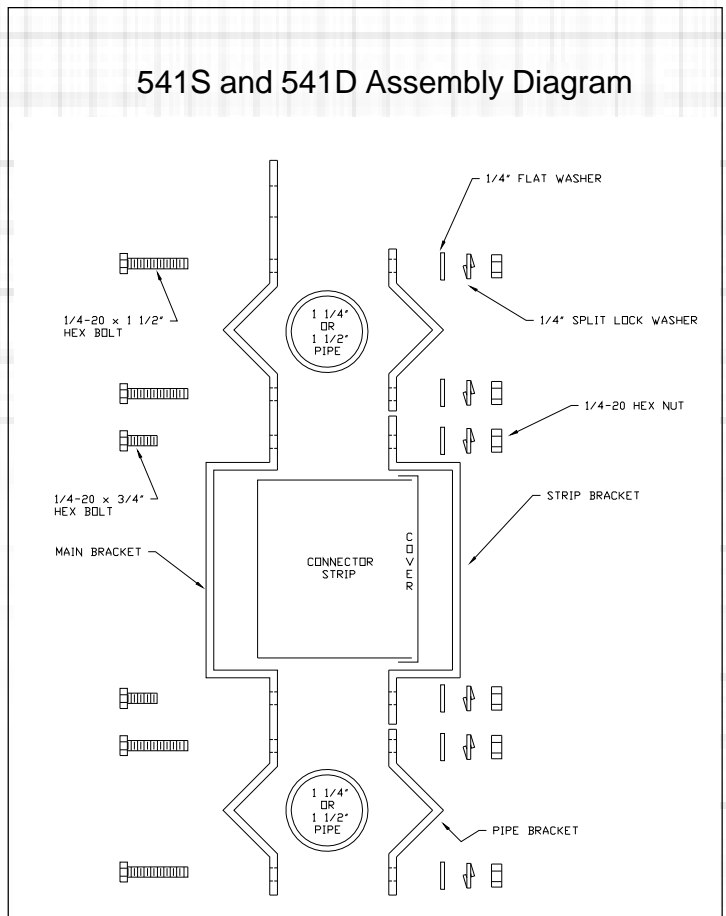


General Safety Precautions

Read and Understand These Entire Instructions Before Proceeding! SAVE THESE INSTRUCTIONS

1. **WARNING!** Do not allow people to handle equipment they are not familiar with. Familiarize anyone using the equipment with its proper use, limits, and safety precautions.
2. **WARNING!** Be sure to follow all instructions and operating limits noted on all labels attached to the equipment.
3. **WARNING!** Proper grounding is critical to the safe operation of all stage lighting equipment. Be sure the equipment and system being used are properly grounded; see NEC article 520-81 and article 250. Periodic inspections must be carried out to insure an adequate ground is maintained on all lighting fixtures.
4. **WARNING!** Disconnect the electrical supply prior to equipment maintenance. **ALL maintenance must be performed by qualified personnel only!**
5. **WARNING!** This equipment is intended to be installed by **qualified electricians** only, and in compliance with all national any and local codes.
6. **WARNING!** Be sure this equipment is properly secured to its means of support. Equipment hanging for extended periods should be checked periodically. **IMPORTANT: A secondary safety support rated for the load to which it will be subjected in the event of a failure of the primary support is strongly recommended.**
7. Periodic maintenance must be performed on all equipment. **ALL maintenance must be performed by qualified personnel only!** In the case of Stage and Studio lighting equipment, the rigors of normal use, especially if subjected to the hard usage environment of touring or rental, will eventually take its toll on any piece of equipment. Hardware must be checked, wire connections tightened, electrical insulation inspected for damage, etc. To insure against future hazards, any wear detected must be reversed either by repair or replacement. It is the equipment user's responsibility to keep the equipment in proper, and safe, working condition.
8. **WARNING!** Use only a UL listed, grounding type plug or connector with the proper rating on any equipment. When installing a plug or connector on a pigtail or three wire lead, **the GREEN conductor MUST ALWAYS be wired to the ground terminal (always colored green or indicated in some way to be ground).** If the pigtail or three wire lead contains one black and one white conductor, the black conductor **MUST** be wired to the hot terminal of its plug or connector (generally colored yellow or brass), and the white conductor **MUST** be wired to the neutral terminal (generally colored white or silver, or indicated in some way to be neutral). Always refer to the instructions included with a plug or connector prior to its installation.



This equipment was created to be used in compliance with the NEC and local codes. Any modification to, or misuse of this fixture will void any warranty or liability claims either explicit or implied. It is the responsibility of the user to be sure this unit is used in compliance with the NEC and local codes.

