

# 150W DIMMING LED Worklite-Houselite



**Data Sheet**

## **H12M x W8M x L8M (1 set) / Luminaire CIE classification**

150W-Constant current LED Worklite/Houselite

Article No.:LED 001

Luminaire Luminous Flux: 13833 lm

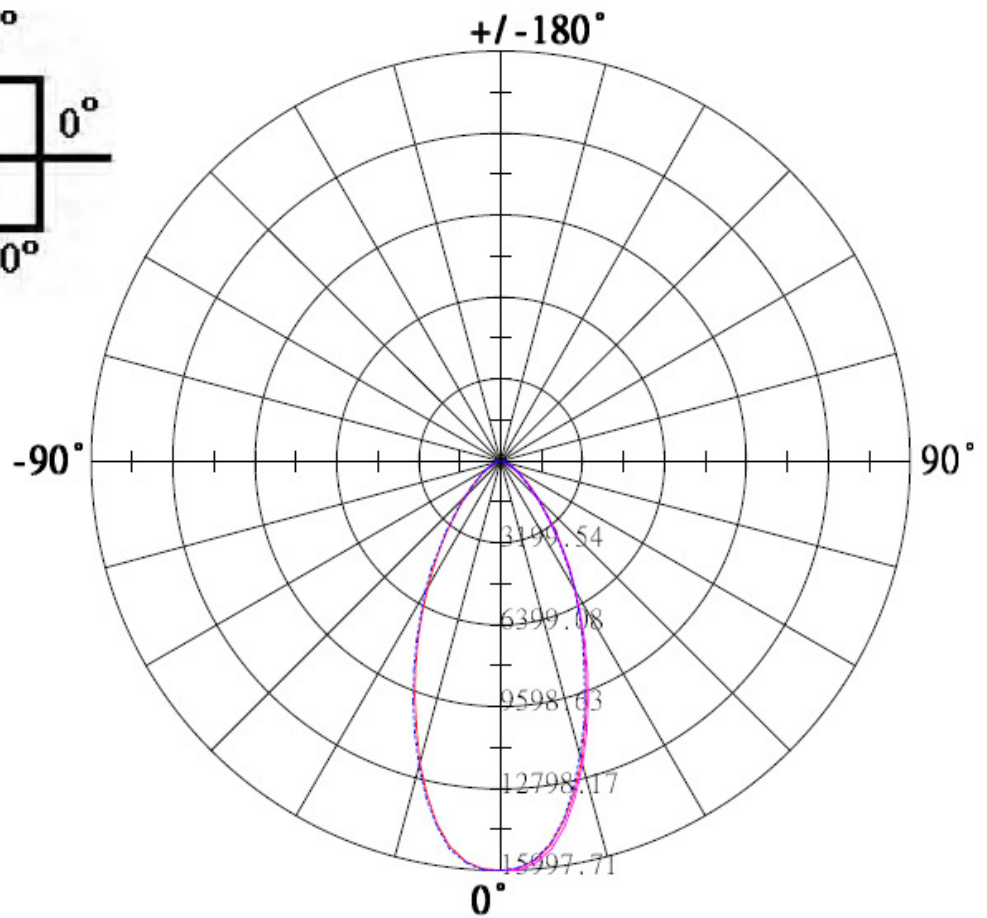
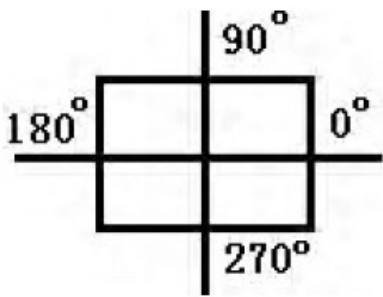
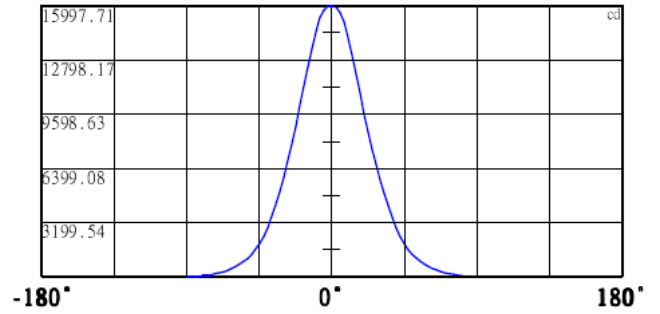
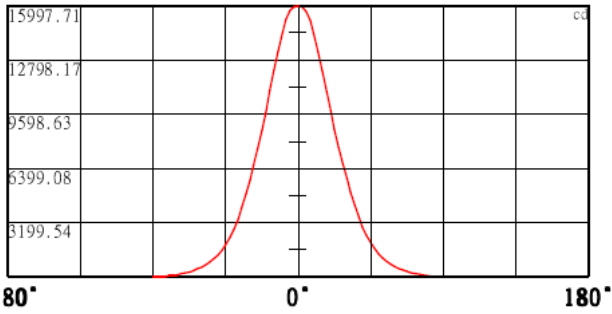
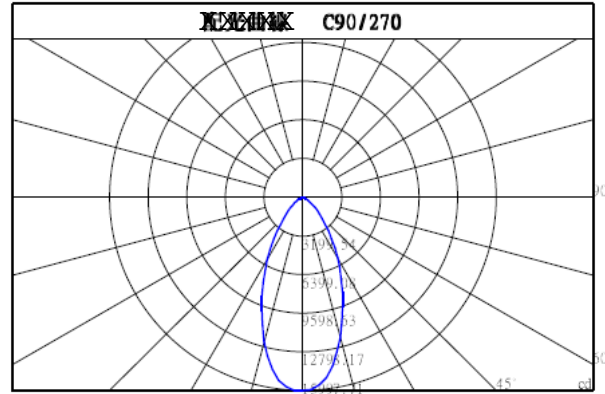
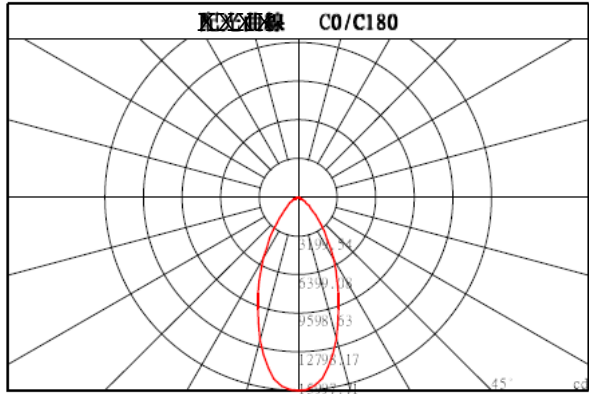
Luminaire Wattage: 130.1 W

Luminaire classification according to CIE: 100

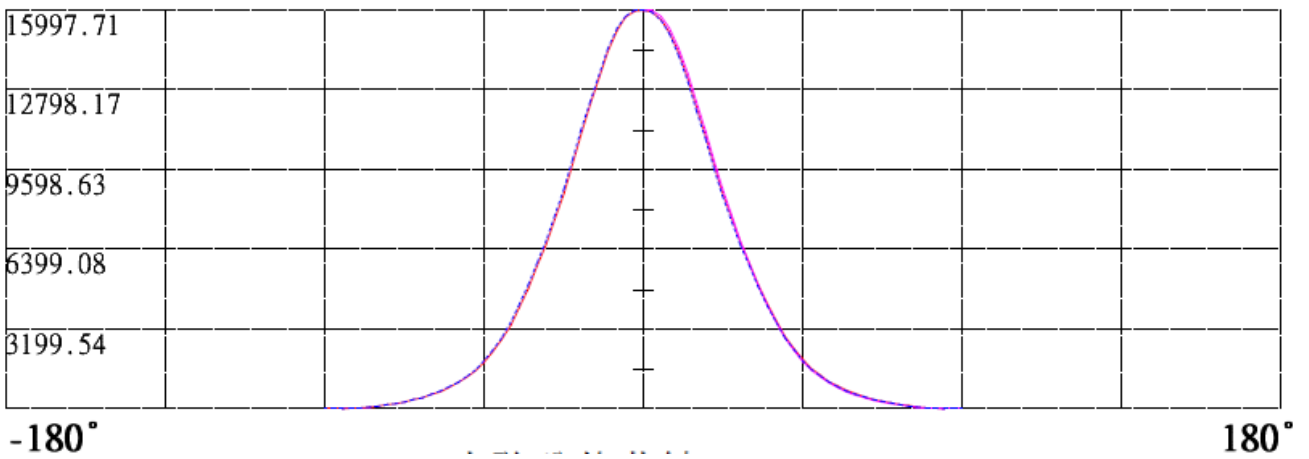
CIE flux code: 82 96 100 100 101

Correction Factor: 1.000

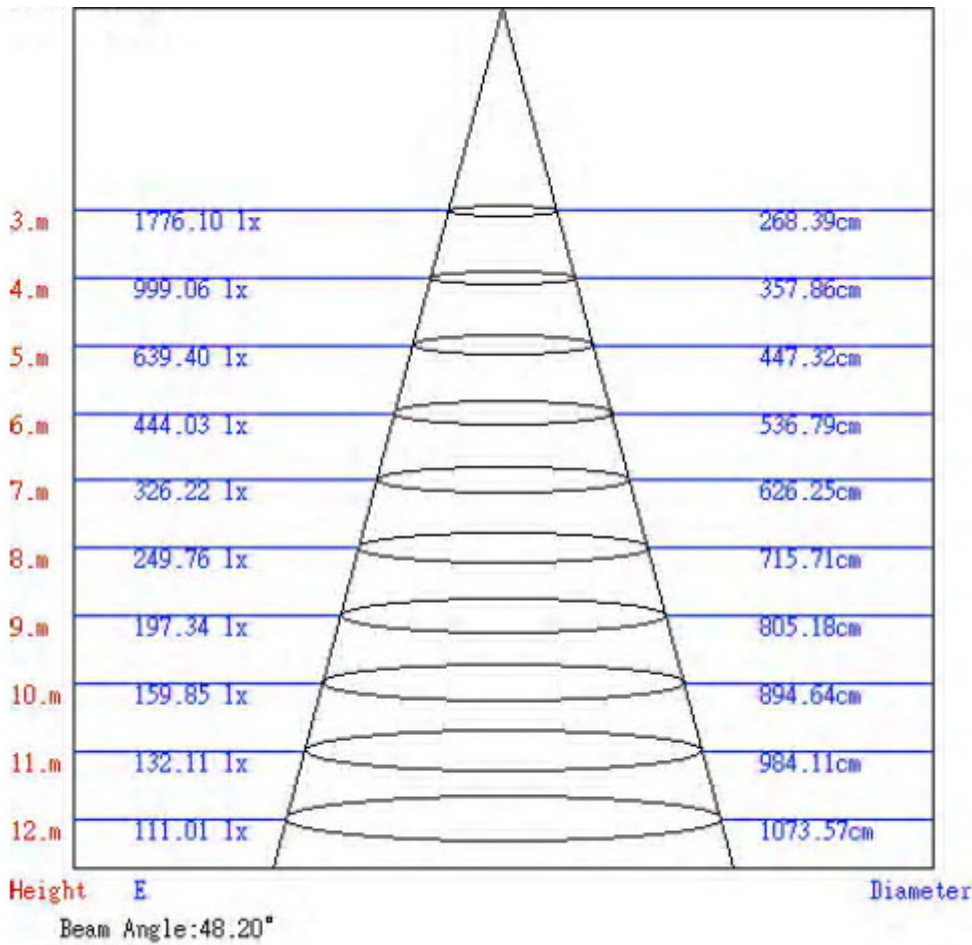
# Luminaire Distribution curve



## Linear Distribution curve



## Photometric chart



## H12M x W8M x L8M (1 set) / Photometric Results

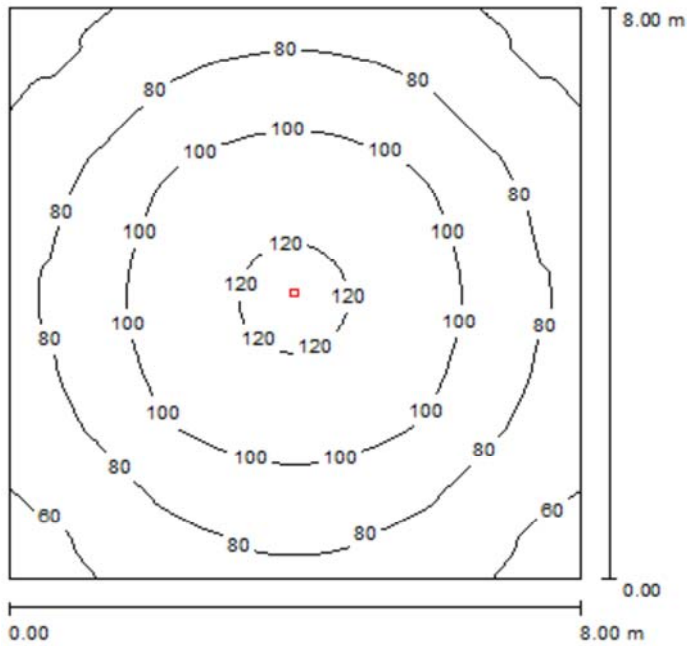
Total Luminous Flux: 13833 lm  
Total Load: 130.1 W  
Light loss factor: 0.80  
Boundary Zone: 0.000 m

Surface	Average illuminances [lx]			Reflection factor [%]	Average luminance [cd/m <sup>2</sup> ]
	Direct	indirect	total		
Workplane	70	18	87	/	/
Floor	63	18	81	20	5.13
Ceiling	0.00	14	14	70	3.14
Wall 1	18	16	34	50	5.48
Wall 2	19	16	35	50	5.51
Wall 3	18	16	34	50	5.45
Wall 4	18	16	34	50	5.42

Uniformity on the working plane  
u0: 0.568 (1:2)  
E<sub>min</sub> / E<sub>max</sub>: 0.407 (1:2)

Specific connected load:  $2.03 \text{ W/m}^2 = 2.33 \text{ W/m}^2/100 \text{ lx}$  (Ground area: 64.00 m<sup>2</sup>)

## H12M x W8M x L8M (1 set) / Summary



Height of Room: 12.000 m, Mounting Height: 12.000 m, Light loss factor: 0.80

Values in Lux, Scale 1:103

Surface	$\rho$ [%]	$E_{av}$ [lx]	$E_{min}$ [lx]	$E_{max}$ [lx]	$u0$
Workplane	/	87	50	122	0.568
Floor	20	81	49	108	0.609
Ceiling	70	14	10	16	0.720
Walls (4)	50	34	11	57	/

### Workplane:

Height:	0.850 m
Grid:	128 x 128 Points
Boundary Zone:	0.000 m

### Luminaire Parts List

No.	Pieces	Designation (Correction Factor)	$\Phi$ [lm]	P [W]
1	1	150W-Constant current (1.000)	13833	130.1

Specific connected load:  $2.03 \text{ W/m}^2 = 2.33 \text{ W/m}^2/100 \text{ lx}$  (Ground area:  $64.00 \text{ m}^2$ )