

FRESNELS

edge™

specifications...

SL6.1K

fresnel 6010A

mechanical

- Extruded aluminum construction
- Gel frame holders with two accessory slots to accept 7-1/2" accessories
- Spring latch gel-frame retainer
- Rigid steel yoke
- Sealed reflector housing
- Tool free relamping
- Insulated handles and hardware
- Powder coat finish
- UL/cUL listed

electrical

- 120/240 volts, 1,000 watt maximum
- 36" high temperature leads in fiber glass sleeve medium prefocus lamp holder
- Dual grounding - socket and housing

lenses

- Heat resistant 6" Fresnel lens
- Spot to flood adjustment

accessories

- Specular spherical aluminum, coated and polished

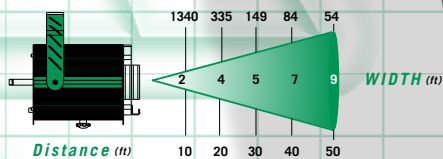
accessories

- 303 Color Frame 7.5"x7.5" (included)
- 342 Barn Door 6"
- 352 Top Hat 6"
- HangTuff C Clamp - aluminum (with integral safety cable)
- Get-A-Grip C Clamp - aluminum
- 103-0533 Safety Cable

photometric data

SPOT FOCUS

Footcandles



Typical Data with STR 1,000W lamp

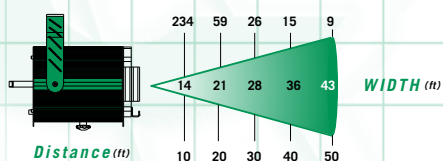
	ANGLE	MF
Beam (50% CBCP)	8°	0.14
Field (10% CBCP)	10°	0.18

To find light output in footcandles (fc) at any distance:
CBCP / (throw distance)² = fc

To find any beam or field WIDTH at any distance:
throw distance X mf = WIDTH

FLOOD FOCUS

Footcandles



Typical Data with STR 1,000W lamp

	ANGLE	MF
Beam (50% CBCP)	57°	1.08
Field (10% CBCP)	71°	1.43

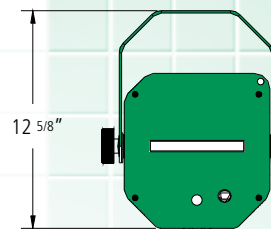
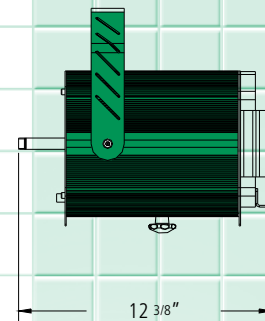
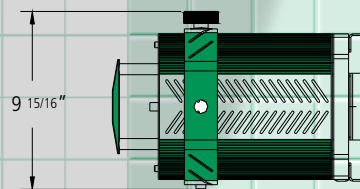
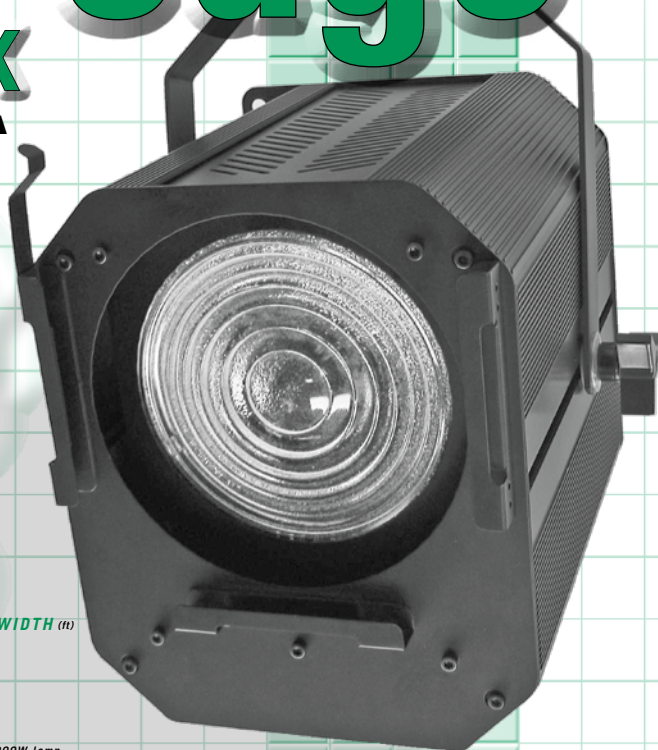
To find light output in footcandles (fc) at any distance:
CBCP / (throw distance)² = fc

To find any beam or field WIDTH at any distance:
throw distance X mf = WIDTH

lamp information

SL6.1K - fresnel 6010A

Lamp	Watts	CBCP Spot	CBCP Flood	Color Temp	Average Life	Lumens
BTL	500	54,112	8,775	3050	1100	11,000
BTM	500	63,270	10,260	3200	100	13,000
BTN	750	83,250	13,500	3050	500	17,000
BTP	750	99,900	16,200	3200	200	20,000
BTR	1000	134,000	23,400	3200	250	28,500



FIXTURE WEIGHT	SHIPPING WEIGHT
10.25 LBS.	1/13 LBS.