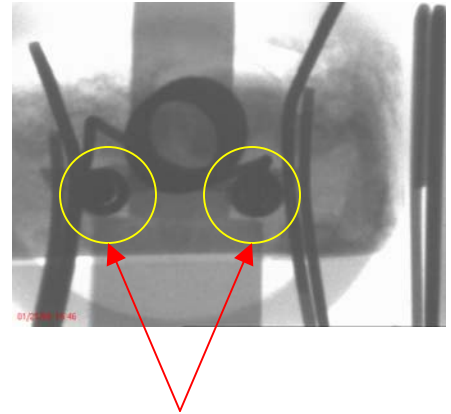


# MiniStrip Lamp Installation Guide

1. Disconnect from power.
2. Align contact pins of lamp with contact slots on lamp holder porcelain.
3. Align the reflector portion of lamp with piano wire guide mounted on metal portion of lamp holder assembly.
4. Ensure that lamp base is parallel to the horizontal plane of the fixture.
5. Press the lamp base downward until the lamp contacts fully seat in the lamp holder. (Pushing the lamp into place by exerting pressure on the reflector portion of the lamp may not seat the lamp properly).



Lamp Properly Seated (x-ray view)

- Note that the contact pins on the lamp are fully resting on the porcelain shelf and that the lamp base is not at an angle.

## Lamp Not Fully Seated (x-ray view)

- Note that the lamp is seated only on one side in photo “A”.
- Note that the lamp has not been pressed into the lamp holder fully in photo “B”.
- **Installing a lamp while the circuit is energized and poorly seated lamps WILL cause an arc to occur at the point where the socket contact and the lamp pin meet. This WILL result in eventual socket failure and shortened lamp life.**
- **Do not mix different wattage lamps in the same circuit - the lamps WILL fail and the lamp holders WILL be damaged.**
- **Important:** Lighting & Electronics, Inc. is not responsible for damage to sockets and/or lamps due to improper lamping.

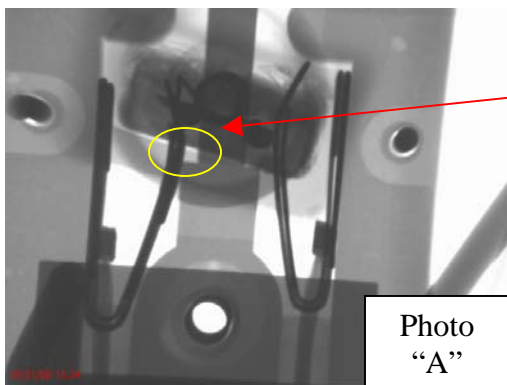


Photo  
“A”

### Incorrect Installation

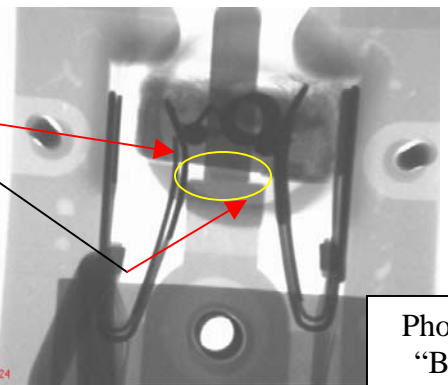


Photo  
“B”